

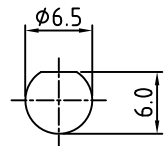
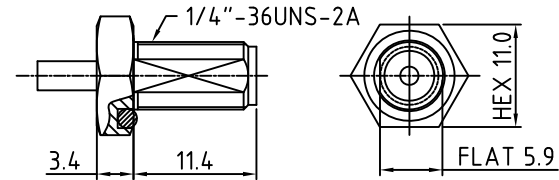
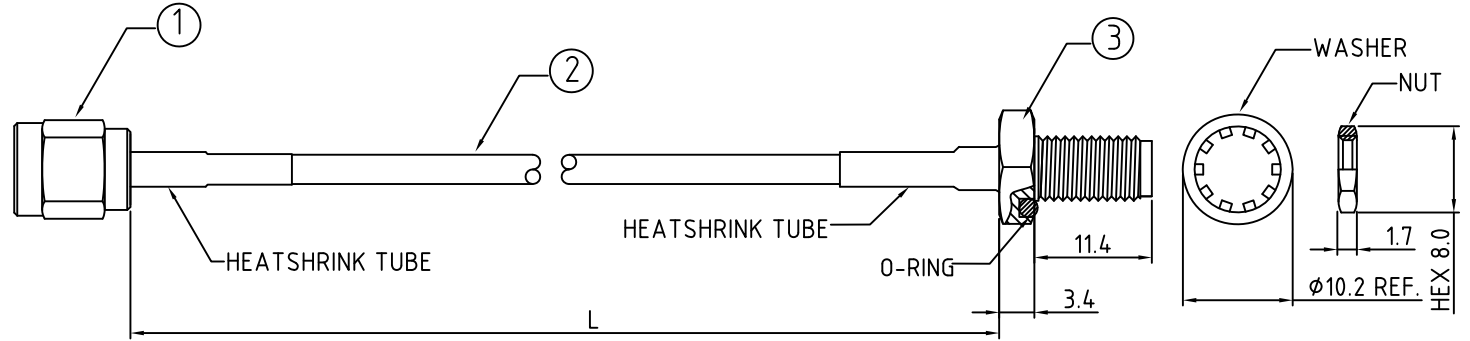
CABLE 112 RF: RF CABLE ASSEMBLY, SMA S/T PLUG + SMA S/T BULKHEAD WITH O-RING + MULTIPLE CABLE SIZES - 3GHz, 6GHz

SPECIFICATIONS:

1. SMA STRAIGHT PLUG P/N:  
 FOR RG174 CABLE: RFCT-SMA027-M74.  
 FOR RG178 CABLE: RFCT-SMA022-M78.  
 FOR RG58 CABLE: RFCT-SMA109-M58.
2. MIT COAXIAL CABLE (SEE P/N OPTIONS FOR DETAIL).
3. SMA STRAIGHT BULKHEAD WITH O-RING, P/N:  
 FOR RG174 CABLE: RFCT-SMA032-F74.  
 FOR RG178 CABLE: RFCT-SMA032-F78.  
 FOR RG58 CABLE: RFCT-SMA110-F58.

NOTES:

1. ELECTRICAL WORKING FREQUENCY RANGE:  
 DC- 3GHz (RG58 CABLE)  
 DC- 3GHz (RG174 CABLE)  
 DC- 6GHz (RG178 CABLE)
2. IMPEDANCE: 50 OHM.
3. TEMPERATURE RANGE:  
 -20°C TO +80°C (RG174 CABLE)  
 -40°C TO +125°C (RG178 CABLE)  
 -40°C TO +125°C (RG58 CABLE)



HOW TO ORDER  
 CABLE 112 RF - X X X X - X - X

"L" LENGTH IN MM  
 eg: 100MM = 0100  
 (MIN. = 0050)  
 STANDARD = 0100, 0150, 0200  
 Tolerance: <50mm : ±2mm.  
 51-200mm: ±5mm.  
 201-500mm: ±7mm.  
 >501mm: ±10mm.

WASHER AND NUT OPTIONS:  
 BLANK = SEPERATELY PACKED (STANDARD)  
 A = ASSEMBLED WITH CONNECTOR

CABLE SIZE OPTIONS:  
 1 = RG174 CABLE, COLOR: BLACK  
 2 = RG178 CABLE, COLOR: BROWN  
 3 = RG58 CABLE, COLOR: BLACK

SMA JACK DETAIL DIMENSION

RECOMMENDED SMA MOUNTING HOLE

REV. DATE & DRN  
 1.0 20/04/11 - INTX RELEASE  
 1.1 04/09/20 - INTX  
 UPDATE SMA P/N'S  
 ADD RFTM CABLE OPTION  
 ADD NOTES 2 & 3  
 1.2 20/11/22 - ADD CABLE OPTION

Scale: NTS	THIRD ANGLE	Unstated .X .XX .XXX ANGLES	Tolerances: N/A N/A N/A	Material SEE NOTE
Drawn: CC				
App'd: XXX	Title CABLE ASSEMBLY	NOT TO SCALE		
Date: 30 NOV. '22	Revision: 1.2	Unit: mm		

www.gradconn.com

THIS DRAWING IS CONFIDENTIAL AND MUST NOT BE COPIED OR DISCLOSED WITHOUT WRITTEN CONSENT

Type: Cable 112 RF
CABLE 112 RF
Drawing Number:
Sheet 1 of 1
Drawing © E and O E